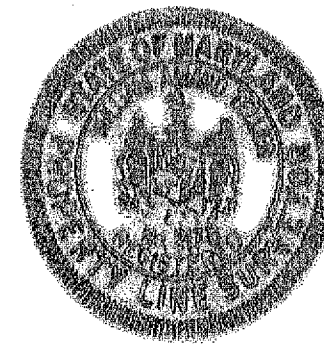


WE JOIN IN AND ASSENT TO THIS PLAN OF SUBDIVISION

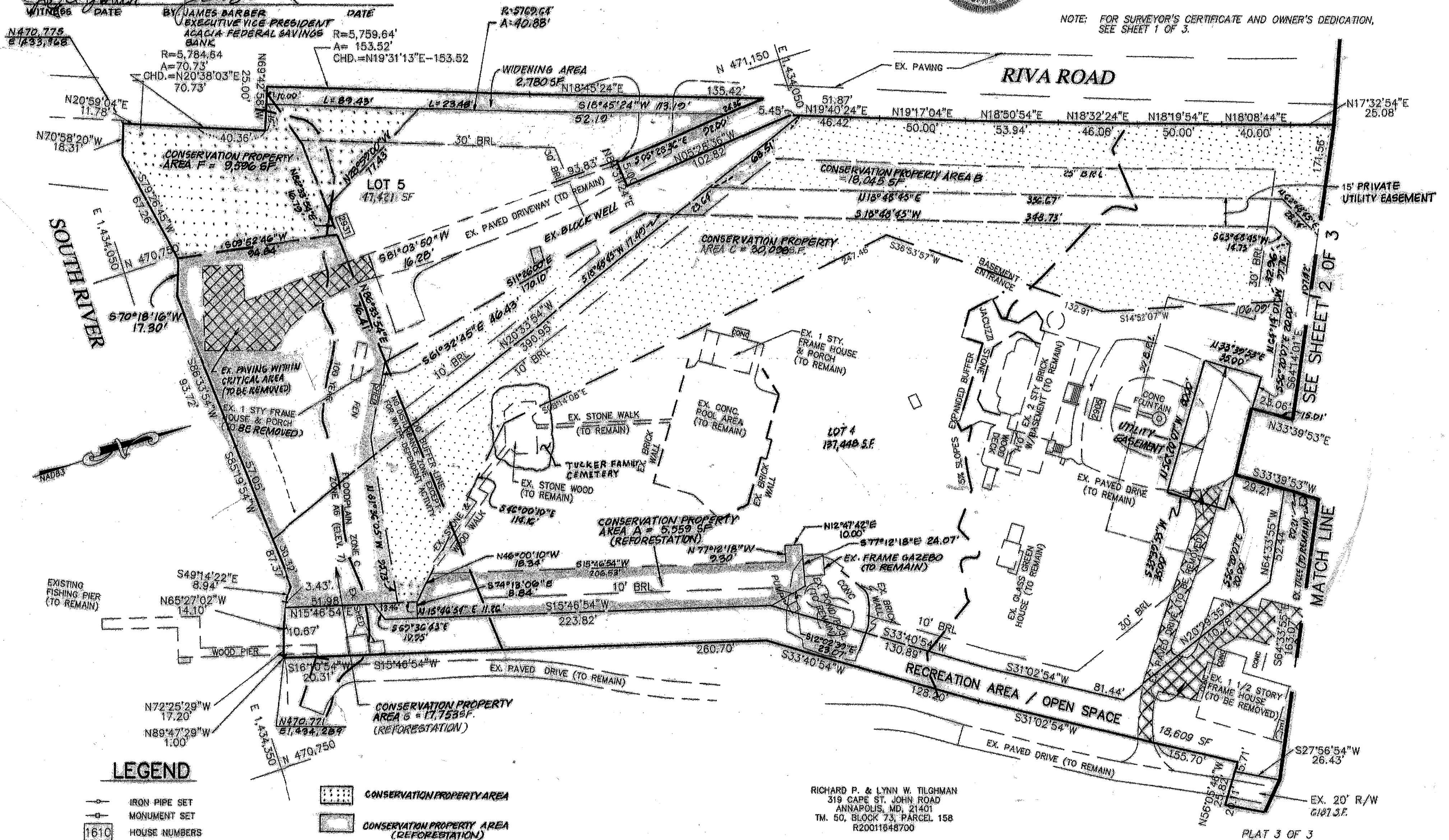
Witness: *James Barber* 11-2-98, *Miriam T. Blonder* 11-12-99, *Joyce Brown* 11-12-99. BY: *Harvey Blonder* 11-2-98, *Miriam T. Blonder* 11-12-99, *James Barber* 11-12-99.



SURVEYOR'S CERTIFICATE  
SEE SHEET 1 OF 3 FOR CERTIFICATION

*William A. Tellier* 10-15-1997  
WILLIAM A. TELLIER RPLS  
MARYLAND PROPERTY LINE SURVEYOR NO. 217B DATE

NOTE: FOR SURVEYOR'S CERTIFICATE AND OWNER'S DEDICATION, SEE SHEET 1 OF 3.



LEGEND

- IRON PIPE SET, MONUMENT SET, HOUSE NUMBERS, B.R.L. - BUILD. RESTRICTION LINE, COORDINATES, CURVE NUMBERS, NOT RADIAL TO CURVE, EXISTING PAVING TO BE REMOVED.

- CONSERVATION PROPERTY AREA, CONSERVATION PROPERTY AREA (REFORESTATION)

APPROVED: ANNE ARUNDEL COUNTY, MARYLAND OFFICE OF PLANNING & ZONING... DENIS D. CANAVAN, PLANNING & ZONING OFFICER

GENERAL NOTES CONTINUED

13. LOTS 1-4 ARE DENIED ACCESS TO RIVA ROAD.

RICHARD P. & LYNN W. TILGHMAN 319 CAPE ST. JOHN ROAD ANNAPOLIS, MD, 21401

PLAT 3 OF 3 SUBDIVISION OF OLDE BLOOMFIELD SECOND ASSESSMENT DISTRICT TAX MAP 50 BLOCK 23 PARCEL 156 ANNE ARUNDEL COUNTY, MARYLAND, 21037

DATE: OCTOBER, 1995 SCALE: 1"=40'



Sigma Engineering, Inc. 45 OLD SOLOMONS ISLAND ROAD SUITE 204 ANNAPOLIS, MARYLAND 21401 TELEPHONE (410) 266-5599

SUBD. NO. 1993-093 PROJ. NO. 1995-246